

**GRIFOS PARA INDICADORES DE NIVEL
PURGA INCORPORADA**

CARACTERISTICAS:

PN40

CALIDADES:

CUERPO Y PURGA: A105

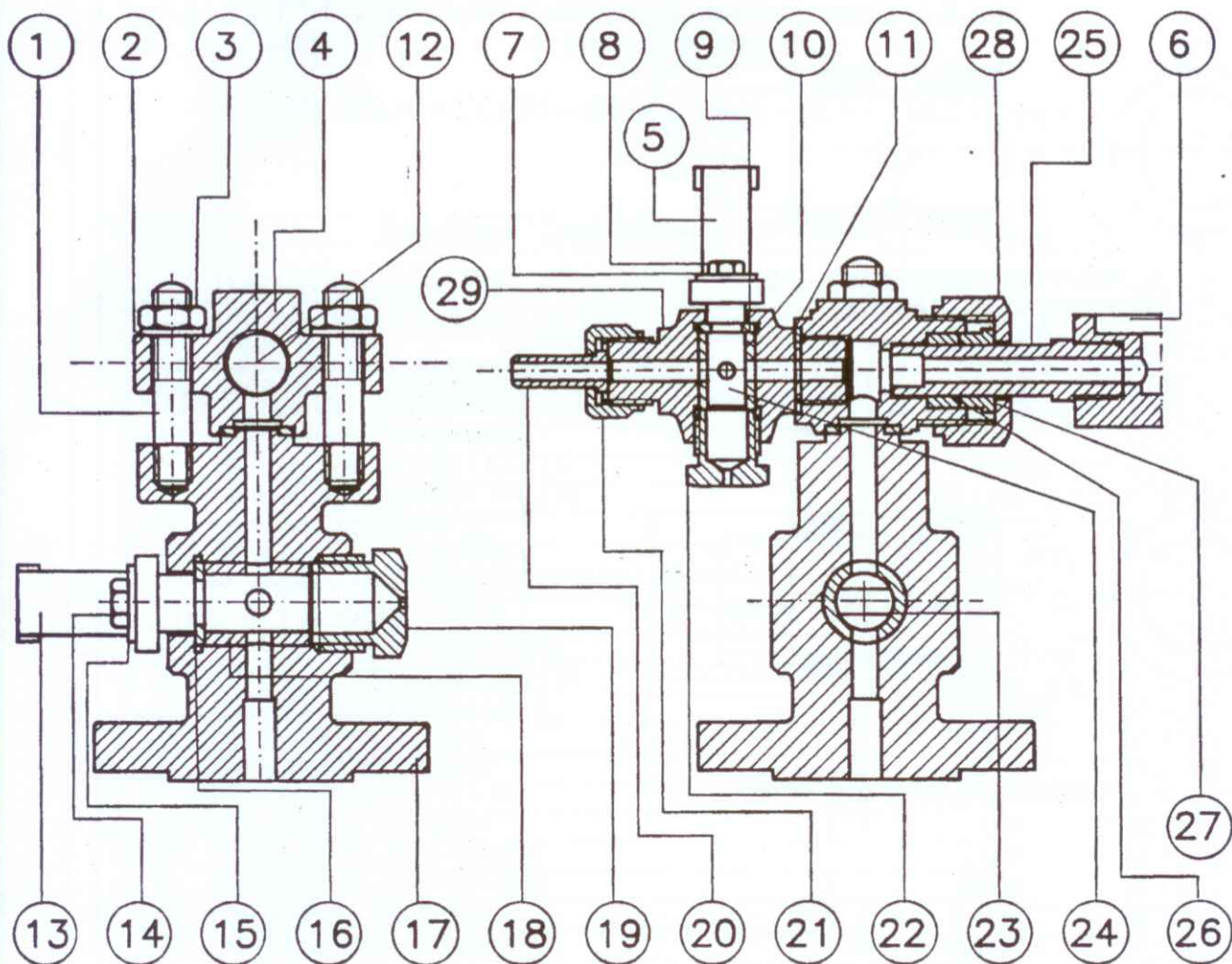
INTERIOR: INOX

JUNTAS: TECNOFREE ASBESTOS FREE.

TORNILLERIA: 8.8

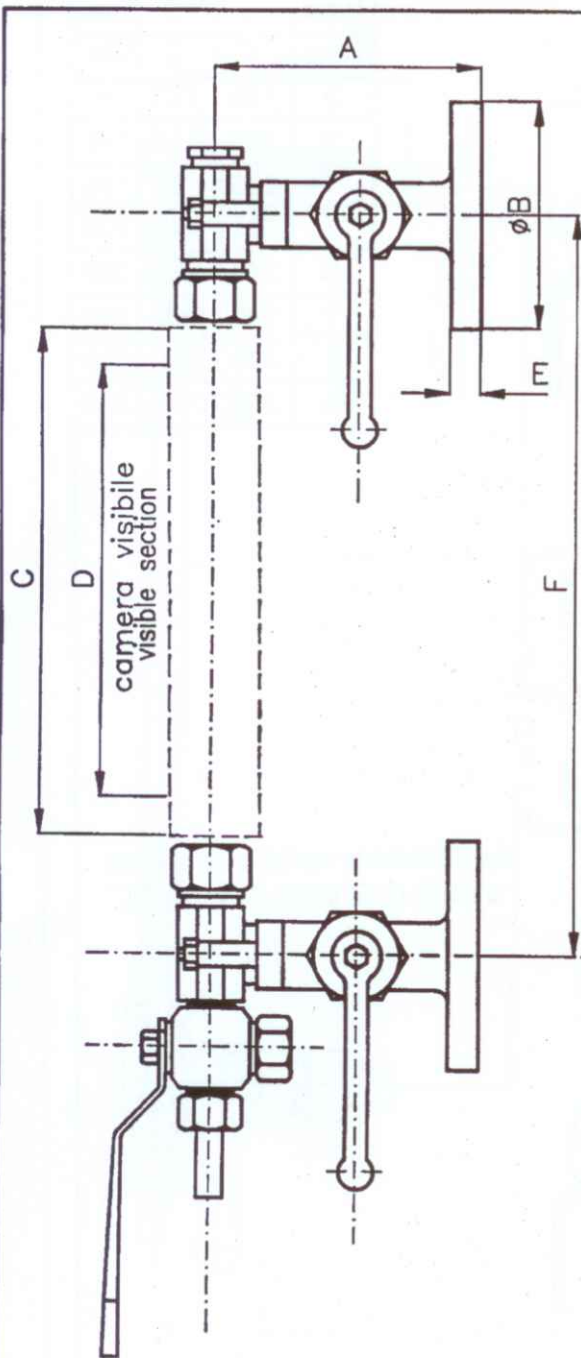
MEDIDAS: 1/2" 6 3/4 ROSCADO, DN20 C/BRIDA DIN.

Fig. 455 + 456



JUEGO DE GRIFOS DE NIVEL

CARACTERISTICAS:
 ACCIONAMIENTO POR PALANCA
 CIERRE POR EMBOLO
CALIDADES:
 CUERPO: A105 ó AISI 316
 EMBOLO: AISI 303 ó AISI 316
 EMPAQUETADURA: TECNOFREE 200 LIBRE DE AMIANTO.
 MEDIDAS: 1/2"-3/4" ó 1", ROSCA GAS O NPT, BRIDAS DIN O ANSI.



Tipo	F.Min	F.Max	A	B	C	D	E	L.Vetro	Pesokg
2	260	310	130	105	155	115	18	140	9.90
3	285	335	130	105	180	140	18	165	10.20
4	310	360	130	105	205	168	18	190	10.50
5	340	390	130	105	235	195	18	220	11.20
6	370	420	130	105	265	225	18	250	11.70
7	400	450	130	105	295	255	18	280	12.20
8	440	490	130	105	335	295	18	320	12.90
9	465	515	130	105	360	315	18	340	13.40
205x2	515	565	130	105	410	373	18	190	13.80
235x2	575	625	130	105	470	433	18	220	15.20
265x2	635	685	130	105	530	493	18	250	16.10
295x2	695	745	130	105	590	553	18	280	17.20
335x2	775	825	130	105	670	633	18	320	18.60
360x2	825	875	130	105	720	673	18	340	19.60
265x3	910	950	130	105	795	758	18	250	20.55
295x3	1000	1040	130	105	885	848	18	280	22.20
335x3	1120	1160	130	105	1005	968	18	320	24.30
360x3	1195	1235	130	105	1080	1028	18	340	25.80
295x4	1295	1335	130	105	1180	1143	18	280	27.20
335x4	1455	1505	130	105	1340	1303	18	320	30.00
360x4	1555	1595	130	105	1440	1383	18	340	32.00
295x5	1590	1630	130	105	1475	1438	18	280	32.25
335x5	1790	1830	130	105	1675	1638	18	320	35.70
360x5	1915	1955	130	105	1800	1738	18	340	38.20
335x6	2125	2165	130	105	2010	1973	18	320	41.40
360x6	2275	2315	130	105	2160	2093	18	340	44.40
360x7	2635	2675	130	105	2520	2448	18	340	50.60

In drawing 01.51 the housing cocks connection is made with a flask.
 In drawing 04.51 the housing cocks connection is made with rounded tubes and stuffing box.

GRIFOS PARA INDICADORES DE NIVEL PURGA SEPARADA

CARACTERISTICAS:

PN40

CALIDADES:

CUERPO Y PURGA: A105

INTERIOR: INOX

JUNTAS: TECNOFREE ASBESTOS FREE.

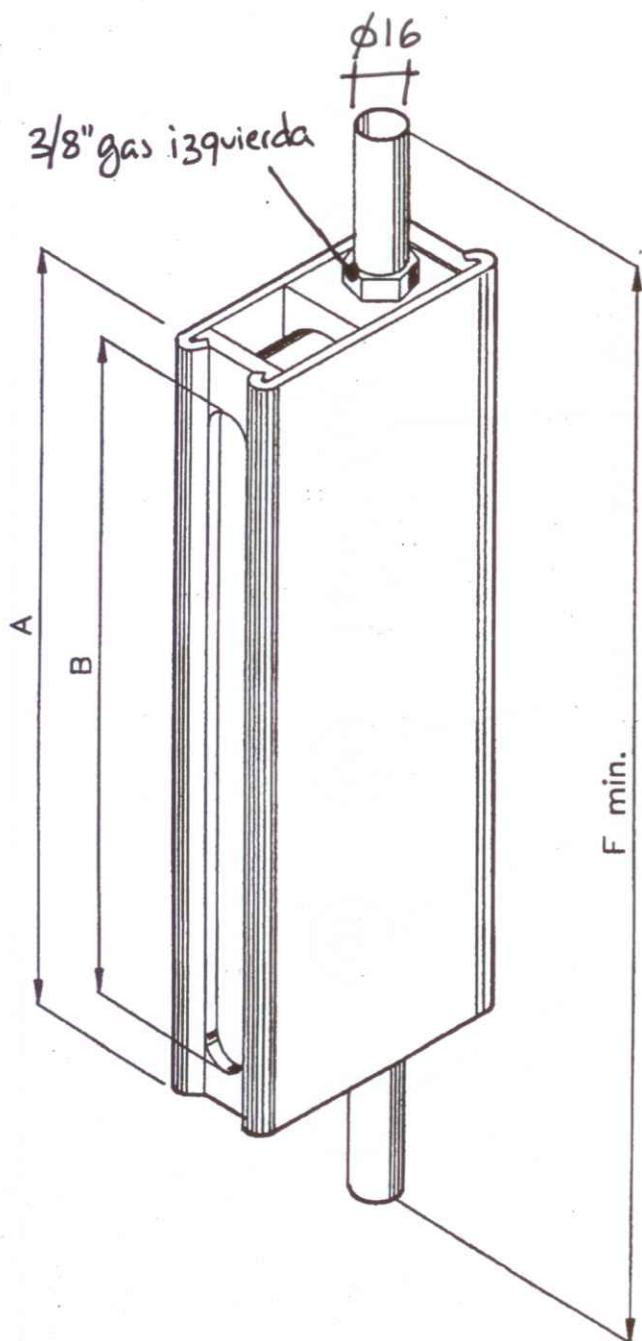
TORNILLERIA: 8.8

MEDIDAS: 1/2" ó 3/4" ROSCADO, DN20 ó DN25 C/BRIDA DIN O ANSI.

Tabella per Rubinetti di intercettazione in A 105
A 105 cut off cocks tab

Rif. Draw. n°. 01.51 – 04.51 – 16.01 – 16.02 – 16.03 – 19.01

Pos.	Descrizione / Description	Pie.	Material	Code
1	Tirante di collegamento / Tie rod	4	B7	00.11.001
2	Rondella / Washer Ø 24 x 13 x 2,5	4	UNI 6592	00.20.003
3	Dado / Nut M 12	4	UNI 5587	00.21.001
4	Supporto superiore / Upper support	1	A 105	00.10.001
5	Maniglia per scarico / Drain cock handle	1	Acciaio stamp.	00.16.001
6	Scatola livello / Level housing	1	A 105	04.03.000
7	Rondella / Washer Ø 12 x 6,5 x 1,5	1	UNI 6592	00.20.001
8	Vite t. e. / H. h. cap screw M 6 x 10	1	UNI 5739 / 8.8	00.22.001
9	Anello spaccato / Split ring	1	AISI 316	00.15.001
10	Bossolo / Plug Ø 18 x 12 x 23	1	Grafite / PTFE	00.14.001
11	Guarnizione / Copper gasket Ø 27 x 21,5 x 1,5	2	Rame	00.12.001
12	Tappo / Screw cap	1	A 105	04.19814
13	Maniglia per corpo / Handle casing	2	Acciaio stamp.	00.16.002
14	Vite t. e. / H. h. cap screw M 8 x 12	1	UNI 5739 / 8.8	00.22.002
15	Rondella / Washer Ø 20 x 8,5 x 2	2	UNI 6592	00.20.002
16	Anello spaccato / Split ring	1	AISI 316	00.15.002
17	Corpo rubinetto / cock body	2	A 105	01.01.001
18	Bossolo / Plug Ø 26 x 18 x 32	2	Grafite / PTFE	00.14.002
19	Premibossolo / Stuffing box	2	AVP	03.19813
20	Tubetto scarico / Drain cock pipe	1	AVP	05.19815
21	Calotta scarico / Drain cock cover	1	AVP	02.19812
22	Premibossolo / Stuffing box	1	AVP	06.19816
23	Maschio cilindrico / Cylindrical plug	2	AISI 303	00.13.002
24	Maschio cilindrico / Cylindrical plug	1	AISI 303	00.13.001
25	Tubetto rettificato per scatola / Grinded pipe for housing	2	AISI 303	15.1981L
26	Guarnizione per tubetti / Packing ring for pipes Ø 23,5x16x10	2	Grafite / PTFE	00.13.001
27	Premiguarnizione / Stuffing box	2	AVP	00.17.002
28	Calotta premiguarnizione / Stuffing box cover	2	AVP	00.19810
29	Corpo rubinetto scarico / Drain cock body	1	A 105	21.01.000
30	Guarnizione / Copper gasket Ø 14 x 9 x 1,5	2	Rame	00.12.002
31	Guarnizione / Copper gasket Ø 23 x 14,5 x 2	2	Rame	00.12.003
32	Impugnatura maniglia corpo / Handle grip for casing	2	Nylon PA6	00.16.004
33	Impugnatura maniglia scarico / Handle grip for drain	1	Nylon PA6	00.16.003
34	Guarnizione / Gasket Ø 25,5 x 10 x 3	1	Grafite / PTFE	00.13.008
35	Guarnizione tubo vetro / Packing ring for glass Ø23,5x16x10	2	Graf./Gomma/PTFE	00.13.002
36	Calotta premig. per tubo vetro/ Stuffing box cover for glass	2	AVP	02.01.003
37	Corpo rubinetto monolitico / Monolithic cock body	2	A 105	01.01.002
38	Staffa di bloccaggio / Clamping bracket	2	A 105	00.10.003
39	Supporto inferiore / Lower support	1	A 105	00.10.002



Type	F.Min.	F.Max.	A	B	Glass.L	Weight
Tipo	F.Min.	F.Max.	A	B	L.Vetro	Pesokg
2	260	310	155	115	140	2.70
3	285	335	180	140	165	3.70
4	310	360	205	168	190	3.30
5	340	390	235	195	220	4.00
6	370	420	265	225	250	4.50
7	400	450	295	255	280	5.00
8	440	490	335	295	320	5.70
9	465	515	360	315	340	6.20

INDICADORES DE NIVEL

CARACTERISTICAS:

PN16 ó PN40

CALIDADES:

CUERPO, GUIA Y TAPA EN A105.

CRISTAL: BOROSILICATO S/ DIN 7081

JUNTAS: TECNOFREE ASBESTOS FREE.

TORNILLERIA: 8.8

ESPIGAS: AISI 304